



INTRODUCTION

The profession of architect is an beautiful art, one of the seven arts which together with painting, sculpture, music, poetry, dance and cinema should provoke special feelings in those who use it.

Currently in Italy we are experiencing a period of radical and profound transformation of both society and lifestyles , due to a migration of money and capital that tend to concentrate in a few hands , then the middle class disappears and create profound differences between " those who have and those who have not".

In this sense, the architecture responds with the client which has different needs, but the architect , in any case you have made a sharer, take charge of the practical needs and respond accurately, fairly and honestly in entrusting the assignment the work of art to be carried out .

PHILOSOPHY OF MY WORK

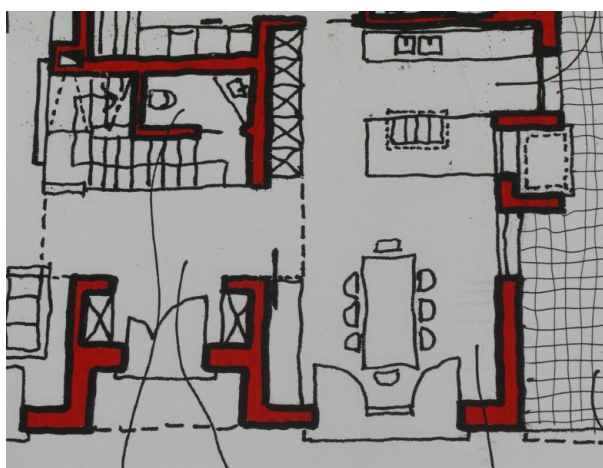
Why should I go to an architect ?

When you embark on the initiative to create a work building , whether new or restoration / renovation, should be pondered in great detail all the actions of planning, timing , execution and evaluation of economic , binding all at a coordinated program.

The project is intended as the relationship of mutual growth between the client and the architect: that is the only way the work, which is a work of art, will have all the features of the added values of quality, expression and lyricism. To the Administration is delivered the project, in which are represented graphically and concisely ideas that will shape both the spaces related to the functions of living, and to the external views in relation to the surrounding environment.

The architect is the central figure of mediation that must carry through ideas and be guarantor for the responsibilities assigned work. To give it to an embodiment of the project, the need to verify the regulatory - urban correspondences within a chain of bureaucratic controls and constantly evolving laws and to collaborate with other professionals: the structural engineer construction, technicians of facilities, technical safety and contracting companies .

The project becomes plastic form with the actual executive , which is why, even during the phase of construction management, for the true interest of the client, it is important that between the architect and the performer of the work, there is a very serious, clear and non- economic relations. The primary asset to be preserved is the success of the building, so all players must engage in a practical and effective, putting the passion, in order to achieve it.



CONSTRUCTION

The building envelope of any size and purpose, is the result of many aspects of evaluation and should continue to be important both from the technical point of view , as required by law, for example, " nearly zero energy building " that will be required within a few years , both from the point of view of the duration of the life cycle.

From the technical point of view , observe the requirements of standard energy , acoustics, structural / seismic, building technologies evolving and various materials on the market.

Dimensional aspects of space are bound to functions and play a lot on the success of the plan and elevation of the building.

The correlations between exterior and interior must be met in order to give completeness to the Report " on - off" , the furniture , the light and the colors are other components that mix the completeness of the manufactured housing and which you should not ignore.

The system technology (thermo and electric) being in constant evolution, has become increasingly important in the design - integrated building system and the consequent definition of the energy class . Another approach to evaluation is choosing (or not choosing) the building "natural" maybe made with locally sourced materials.

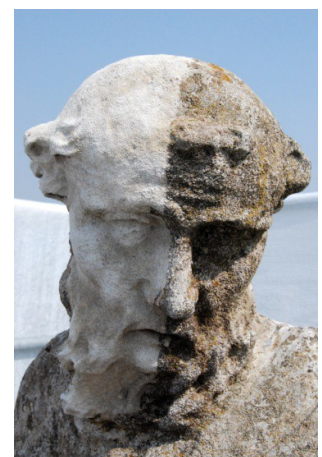
RESTORATIONS

Or the operation of the "recovery".

The theme of the renovation involves now three-quarters of the Italian real estate , which has an average age of half a century.

The intervention must first undergo a design phase that must necessarily lead to the precise knowledge of the materials and textures of the existing structural , in order to perform a simulation calculation with a dynamic model of behavior of the structure in the new situation of the project; the old structure, consistent with its status of use and after careful economic consideration, must be preserved and adapted to the real purpose.

For the protected historic building , it is necessary that the restoration saves as much as possible the existing matter, to preserve in time and witness the talent and the work of original constructors. Every situation is a special case, not repeatable , as it is affected by issues related to the degradation and the methods of intervention for reading, even with the various theories of the restoration. For example in the case of reconstruction of the gaps or deficiencies, the new material must strive to resemble the original by showing a slight difference, or use the techniques that renders the surface slightly different.



URBAN

The city and the environment are integral parts : man relates and interacts with the material spaces (private, public , and natural) . The spaces are connected together by means of communication at different speeds (for example, for the terrestrial zone the slow path walk , the path made semi- fast for bike or scooter, the path made fast with the machine and the path ultra made fast by train or plane).

All this implies that since during the design must be carried out a careful analysis of setting targets to be achieved : it will be satisfied with a listing of the specific strategies to be adopted and to be calibrated with the tools provided by the legislation.

Then as the design and implementation will be excellent limiting the analysis of the elements that qualify in a functional way and over time the state of the place to organize.

Another aspect more and more present in our daily lives is the relationship intangible asset that transforming some ways and lifestyles , such an approach requires additional complexity in determining the functions of the program : the urban project must undergo an examination designed to analyze the relationship of physical locations with virtual places .



LANDSCAPE

It's a quality element that needs to be put in relationship with the person.

We tend to think that the landscape is related to large extensions: mountains, hills , seas and so forth. And reasonable to think that the landscape is also linked to a more introspective and inner sphere: for example the home garden can be likened to the landscape, as well as the city street while I walk.

The design can be implemented in both large and small , so a few simple signs , properly dosed , define the points of view, feelings, colors, sounds and smells in close relationship with the natural and artificial elements.

AGRICULTURE

The soil being a vital element of exchange , for example, allows the chemical reactions , the absorption of rainwater and is equipped with nutrients, you need to be preserved as much as possible for farming and private construction necessary to the conduct of related activities.

You can increase the value of territorial thinking about the potential of the agricultural sector, with projects that support such systems related to the functions agri-tourism, natural paths, green tourism, hippotherapy, etc. and maybe even act as promotion of local products.



PROFESSIONAL PROFILE

My name is Scudella Andrea and I'm a freelancer, architect, graduated in Venice, I have been working professionally in my studio in Padua (Veneto), I deal with the design and construction management in civil - residential - crafted, monumental and architectural restoration of goods subject to protection of bond of supervision, safety of construction sites and in the workplace, environmental acoustics and fire prevention.



Architect ANDREA SCUDELLA

office address and references:

Via Umberto I°, 55/1

I-35010 Grantorto (Padova) – Italia

phone: + 39 49 5960436

cell-phone : + 39 338 4594509

e-mail: progettazioni@andreascudellarchitetto.it

internet: www.andreascudellarchitetto.it

skype: andrea_scudella